

---

---

# **MCP7382X EVALUATION KIT USER'S GUIDE**

**Supports the following Devices:**

- **MCP73826**
- **MCP73827**
- **MCP73828**

Information contained in this publication regarding device applications and the like is intended by way of suggestion only. No representation or warranty is given and no liability is assumed by Microchip Technology Incorporated with respect to the accuracy or use of such information. Use of Microchip's products as critical components in life support systems is not authorized except with express written approval by Microchip.

© 2002 Microchip Technology Incorporated. All rights reserved.

The Microchip logo, name, PIC, and PICmicro are registered trademarks of Microchip Technology Incorporated in the U.S.A. and other countries. All product/company trademarks mentioned herein are the property of their respective companies. FilterLab is a trademark of Microchip Technology in the U.S.A. and other countries.

# **MCP7382X Evaluation Kit User's Guide**

---

---



# MCP7382X EVAL KIT USER'S GUIDE

---

---

## Table of Contents

---

---

<b>Preface</b> .....	<b>v</b>
<b>Chapter 1. Product Overview and Installation</b> .....	<b>1</b>
1.1 Introduction .....	1
1.2 Highlights .....	1
1.3 What the MCP7382X Evaluation Board Is .....	1
1.4 MCP7382X Evaluation Board Kit Components .....	2
<b>Chapter 2. MCP7382X Evaluation Board</b> .....	<b>3</b>
2.1 Description .....	3
2.2 Features .....	3
2.3 Getting Started .....	4
2.4 Detailed Description .....	5
<b>Appendix A. Schematic and Board Layouts</b> .....	<b>9</b>
A.1 Introduction .....	9
A.2 Highlights .....	9
A.3 Board Schematic .....	10
A.4 Board Layout - Top Assembly .....	11
A.5 Board Layout - Top Layer .....	12
A.6 Board Layout - Bottom Layer .....	13
<b>Appendix B. Bill Of Materials (BOM)</b> .....	<b>15</b>
<b>Worldwide Sales and Service</b> .....	<b>18</b>

# **MCP7382X Eval Kit User's Guide**

---

---



# MCP7382X EVAL KIT USER'S GUIDE

---

---

## Preface

---

---

### Introduction

This section contains general information that will be useful to know before using the MCP7382X Evaluation Board. This board currently supports the following devices:

- MCP73826, MCP73827, MCP73828

### Highlights

This section covers the following topics:

- About this Guide
- Recommended Reading
- The Microchip Internet Web Site
- Customer Support

### About This Guide

#### DOCUMENT LAYOUT

This document describes how to use the MCP7382X Evaluation Board.

The User's Guide layout is as follows:

- **Chapter 1: System Overview and Installation** – Important information on how to use the MCP7382X Evaluation Board.
- **Chapter 2: Overview of the MCP7382X Evaluation Board** – For users evaluating the MCP73826, MCP73827, or MCP73828 devices, this chapter describes how to use the various features of the hardware

#### Appendices:

- **Appendix A: Schematic and Board Layouts** – shows the schematic and layout diagrams for the MCP7382X Evaluation Board
- **Appendix B: Bill of Materials** – lists the parts used to build the MCP7382X Evaluation Kit
- **Worldwide Sales and Service** – gives the address, telephone and fax number for Microchip Technology Inc. sales and service locations throughout the world

# MCP7382X Eval Kit User's Guide

---

## Recommended Reading

This user's guide describes how to use the MCP7382X Evaluation Board. For more information regarding the MCP7382X devices, the following are recommended reading.

### **MCP7382X Data Sheets**

These data sheets provide detailed information regarding the MCP7382X Single Cell Lithium-Ion Charge Management Controllers:

- MCP73826 Data Sheet, DS21705
- MCP73827 Data Sheet, DS21704
- MCP73828 Data Sheet, DS21706

### **README Files**

Contains the latest information on the MCP7382X Evaluation Board.  
MCP7382X Evaluation Kit User's Guide (DS51267A)

### **Technical Library CD-ROM (DS00161)**

This CD-ROM contains comprehensive application notes, data sheets, and technical briefs for all Microchip products. To obtain this CD-ROM, contact the nearest Microchip Sales and Service location (see back page).

### **Microchip Web Site**

Our web site (<http://www.microchip.com>) contains a wealth of documentation. Individual data sheets, application notes, tutorials and user's guides are all available for easy download. All documentation is in Adobe Acrobat (pdf) format.

### **Microsoft® Windows® Manuals**

This manual assumes that users are familiar with the Microsoft Windows operating system. Many excellent references exist for this software program and should be consulted for general operation of Windows.

## The Microchip Internet Web Site

Microchip provides on-line support on the Microchip World Wide Web (WWW) site.

The web site is used by Microchip as a means to make files and information easily available to customers. To view the site, the user must have access to the internet and a web browser, such as Netscape<sup>®</sup> Communicator or Microsoft<sup>®</sup> Internet Explorer<sup>®</sup>. Files are also available for FTP download from our FTP site.

### Connecting to the Microchip Internet Web Site

The Microchip web site is available by using your favorite Internet browser to attach to:

**<http://www.microchip.com>**

The file transfer site is available by using an FTP program/client to connect to:

**<ftp://ftp.microchip.com>**

The web site and file transfer site provide a variety of services. Users may download files for the latest Development Tools, Data Sheets, Application Notes, User's Guides, Articles, and Sample Programs. A variety of Microchip specific business information is also available, including listings of Microchip sales offices, distributors and factory representatives. Other data available for consideration is:

- Latest Microchip Press Releases
- Technical Support Section with Frequently Asked Questions
- Design Tips
- Device Errata
- Job Postings
- Microchip Consultant Program Member Listing
- Links to other useful web sites related to Microchip Products
- Conferences for products, Development Systems, technical information and more
- Listing of seminars and events

# MCP7382X Eval Kit User's Guide

---

## Customer Support

Users of Microchip products can receive assistance through several channels:

- Distributor or Representative
- Local Sales Office
- Field Application Engineer (FAE)
- Corporate Applications Engineer (CAE)
- Hot line

Customers should call their distributor, representative or field application engineer (FAE) for support. Local sales offices are also available to help customers. See the back cover for a listing of sales offices and locations.

Corporate applications engineers (CAEs) may be contacted at (480) 792-7627.

In addition, there is a Systems Information and Upgrade Line. This line provides system users a listing of the latest versions of all of Microchip's development systems software products. Plus, this line provides information on how customers can receive any currently available upgrade kits.

The Hot Line Numbers are:

- 1-800-755-2345 for U.S. and most of Canada, and
- 1-480-786-7302 for the rest of the world.





# MCP7382X EVAL KIT USER'S GUIDE

---

---

## Chapter 1. Product Overview and Installation

---

---

### 1.1 Introduction

This chapter provides an overview of the MCP7382X Evaluation Board, and instructions on how to connect the system components.

### 1.2 Highlights

This chapter covers the following topics:

- What the MCP7382X Evaluation Board Is
- MCP7382X Evaluation Board Kit Components

### 1.3 What the MCP7382X Evaluation Board Is

The MCP7382X Evaluation Board is an evaluation and demonstration tool for Microchip Technology's MCP7382X Single Cell Lithium-Ion Charge Management Controllers. The design provides for dynamic versatility while being able to handle accurate measurements.

When connected, this evaluation board allows for the evaluation of the MCP7382X devices in a variety of applications.

# MCP7382X Eval Kit User's Guide

---

## 1.4 MCP7382X Evaluation Kit Components

The MCP7382X Evaluation Kit contains:

- MCP7382X Evaluation Board
- MCP73826-4.2VCH, MCP73827-4.2VUA, and MCP73828-4.2VUA Devices installed
- MCP73826 Datasheet, DS21705
- MCP73827 Datasheet, DS21704
- MCP73828 Datasheet, DS21706
- MCP7382X Eval Kit User's Guide, DS51267



# MCP7382X EVAL KIT USER'S GUIDE

---

---

## Chapter 2. MCP7382X Evaluation Board

---

---

### 2.1 Description

The MCP7382X Evaluation Kit is an evaluation kit designed to support Microchip's MCP73826, MCP73827, and MCP73828 single-cell Li-Ion charge management devices. The evaluation kit is fully assembled and tested. The kit is useful for evaluating simple stand-alone operation or for evaluating applications interfaced with a microcontroller.

### 2.2 Features

The MCP7382X Evaluation Board has the following features:

- Evaluation of MCP73827/28 in 8-pin MSOP packages
- Evaluation of MCP73826 in 6-pin SOT-23 package
- Simple Stand-Alone Operation or Microcontroller Compatible
- Powered from external bench supply or voltage regulated wall cube
- Surface-Mount Design
- Fully Assembled and Tested

# MCP7382X Eval Kit User's Guide

## 2.3 Getting Started

The MCP7382X Evaluation Board is a fully functional, assembled, and tested surface mount board for evaluation of Microchip's MCP73826/27/28 single-cell Li-Ion battery charger devices. The following steps provide simple stand-alone operation. Refer to the set-up configuration diagram below. Note: Do not turn on the input power until all other set-up steps are complete.

1. Place a jumper on JP4 to select the appropriate device for evaluation.
2. Place a jumper on JP5 to enable the appropriate device for evaluation.
3. Connect an external bench supply or voltage regulated wall cube to JP1. **Observe correct polarity of connection.**
4. Connect a single cell Li-Ion battery pack to JP2. **Observe correct polarity of connection.**
5. For MCP73828 evaluation, connect external battery pack thermistor to JP3.
6. Turn-on bench supply or plug-in wall cube.
7. For MCP73827 evaluation, LED D3 shall be turned off when the charge cycle transitions from controlled current mode to constant voltage mode charge.
8. For MCP73828 evaluation, LED D2 shall illuminate when the battery pack is at full charge.

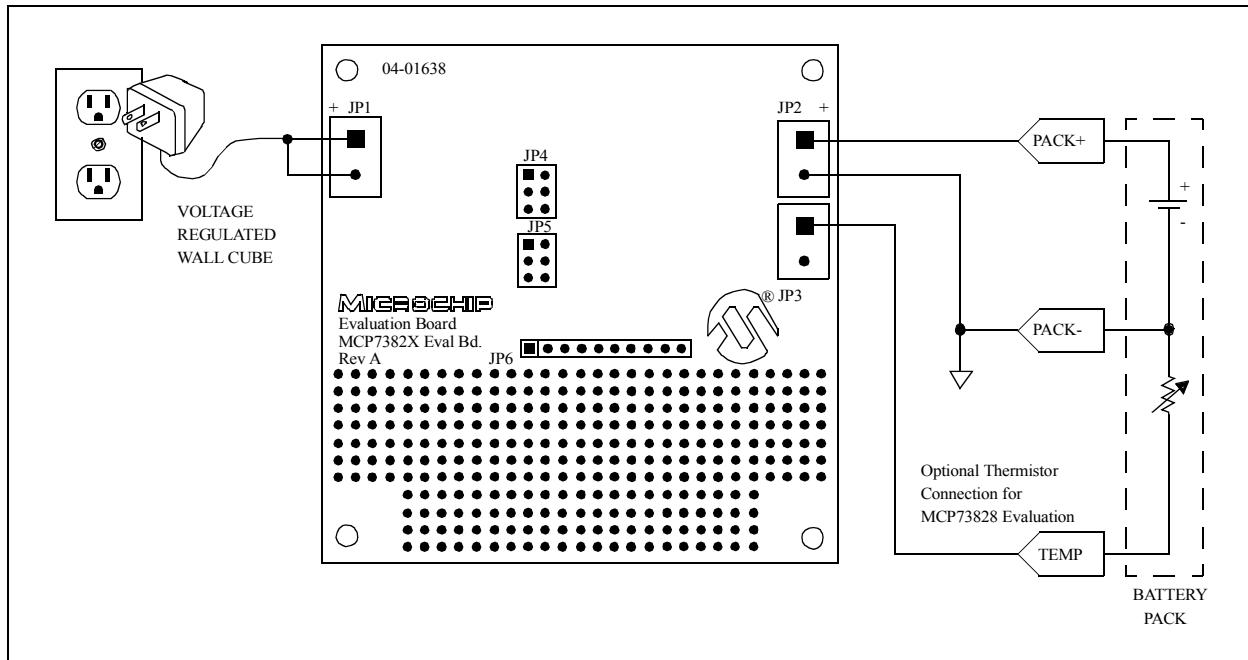


Figure 2.1: Set-Up Configuration Diagram

## 2.4 Detailed Description

The MCP7382X Evaluation Board is set-up to evaluate simple, stand-alone, linear charging of single cell Li-Ion battery packs. Each of the three Li-Ion battery chargers can be evaluated independently. The chargers provide controlled current charging followed by constant voltage charging. The MCP73826, U1, is provided in a 6-pin SOT23 package and is equipped with shutdown control. The MCP73827, U2, is provided in an 8-pin MSOP package. In addition to shutdown control, the MCP73827 signals when the charge cycle transitions from controlled current mode to constant voltage mode. An LED, D3, is illuminated during the controlled current mode. A voltage representation of the charge current,  $I_{MON}$ , is provided for a host microcontroller to monitor the charge profile. The MCP73828, U3, is also provided in an 8-pin MSOP package. In addition to shutdown control, the MCP73828 signals when the charge current has diminished below ten percent of the peak charge current. An LED, D2, is illuminated indicating full charge. A thermistor input is provided to inhibit charging when the cell temperature is outside a pre-defined window. Refer to the appropriate data sheets for details on the individual device features.

### 2.4.1 Input Source

The MCP7382X Evaluation Board is designed to provide an output current of 1A, typical. A 5V  $\pm$ 10%, 6W input source should be utilized to power the evaluation kit. JP1 terminal 1 is the positive input source connection. JP1 terminal 2 is the negative input source connection.

Higher or lower output currents can be obtained by adjusting the value of the sense resistor, R1. A corresponding higher or lower power input source may need to be utilized. Care should be taken not to over stress the pass transistor, Q1, with excessive power dissipation when higher output currents are desired.

### 2.4.2 Reverse Blocking Protection

The MCP7382X Evaluation Board is designed to provide reverse blocking protection in the event a reversed polarity input source is connected to JP1. The reverse blocking protection diode, D1, also ensures that a faulted or shorted input source will not adversely effect the battery pack.

### 2.4.3 Battery Headers

Two headers, JP2 and JP3 are used to connect to an external Li-Ion battery pack and optional protection thermistor. JP2 terminal 1 is the battery pack positive connection, JP2 terminal 2 is the negative battery pack connection. JP3 terminal 1 is for connection to a 10 k ohm NTC thermistor situated in the battery pack for temperature sensing. JP3 terminal 2 is the negative reference for the thermistor.

# MCP7382X Eval Kit User's Guide

---

**CAUTION:** Improper connection of the battery may result in damage to the battery and the possibility of personal injury. It is also important to avoid shorting the battery terminals together.

## 2.4.4 Device Support Options

The MCP7382X Evaluation Board provides evaluation of three Li-Ion battery chargers: MCP73826, MCP73827, or MCP73828. Device selection is performed by placing shunts on JP4 and JP5 as indicated in the table below. JP4 determines which device is controlling the pass transistor. JP5 is used to enable the appropriate device.

**Table 2.1: Shunt Jumpers**

Device Type	JP4 Shunt Location	JP5 Shunt Location
MCP73826	5, 6	1, 2
MCP73827	3, 4	3, 4
MCP73828	1, 2	5, 6

## 2.4.5 Microcontroller option

JP6 provides an easily accessible location for interface to a host microcontroller. The host microcontroller can be used to disable the charger, monitor charge status, monitor the charge profile, or terminate a charge.

A proto-typing area is provided for generation of a self-contained microcontroller solution.

## 2.4.6 Output voltage options

The MCP7382X Evaluation Board is provided with a constant voltage mode output voltage of 4.2V. Evaluation with a constant voltage mode output voltage of 4.1V can be achieved by replacing U1, U2, or U3 with the appropriate device. Refer to the appropriate data sheets for device ordering information.

# MCP7382X Evaluation Board

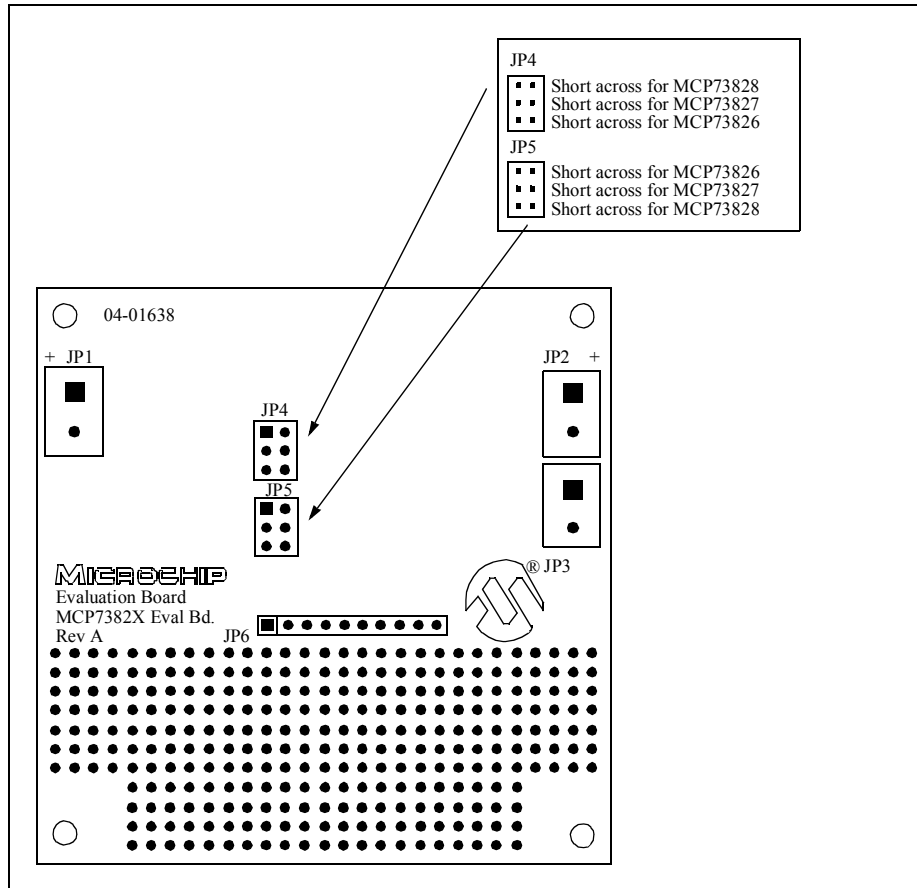


Figure 2.2: Jumper Locations on the MCP7382X Evaluation Board

# MCP7382X Eval Kit User's Guide

---

NOTES:





# MCP7382X EVAL KIT USER'S GUIDE

---

---

## Appendix A. Schematic and Board Layouts

---

---

### A.1 Introduction

This appendix contains the schematic and board layouts for the MCP7382X Evaluation Board.

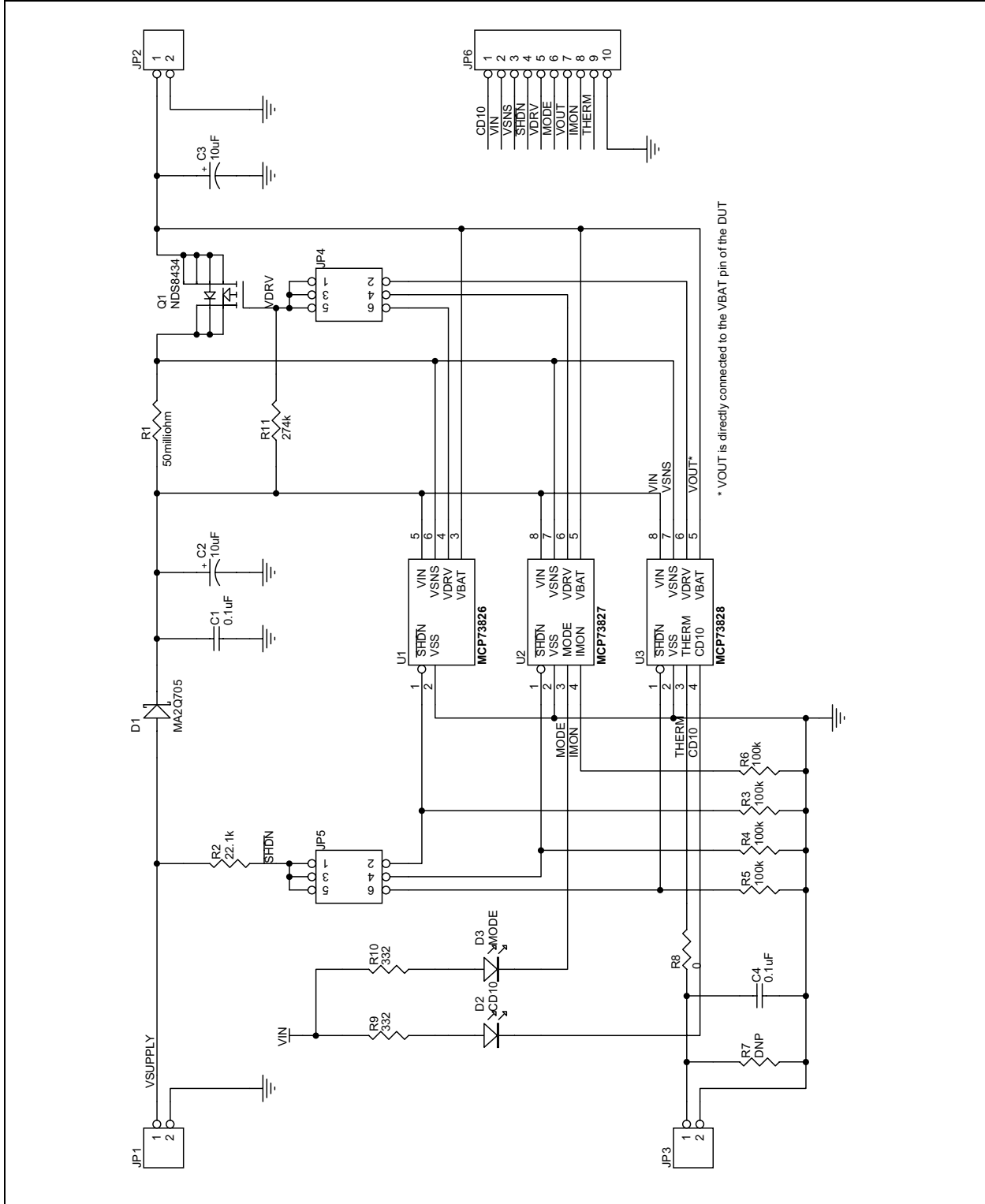
### A.2 Highlights

Diagrams included in this appendix:

- Board Schematic
- Board Layout - Top Assembly
- Board Layout - Top Layer
- Board Layout - Bottom Layer

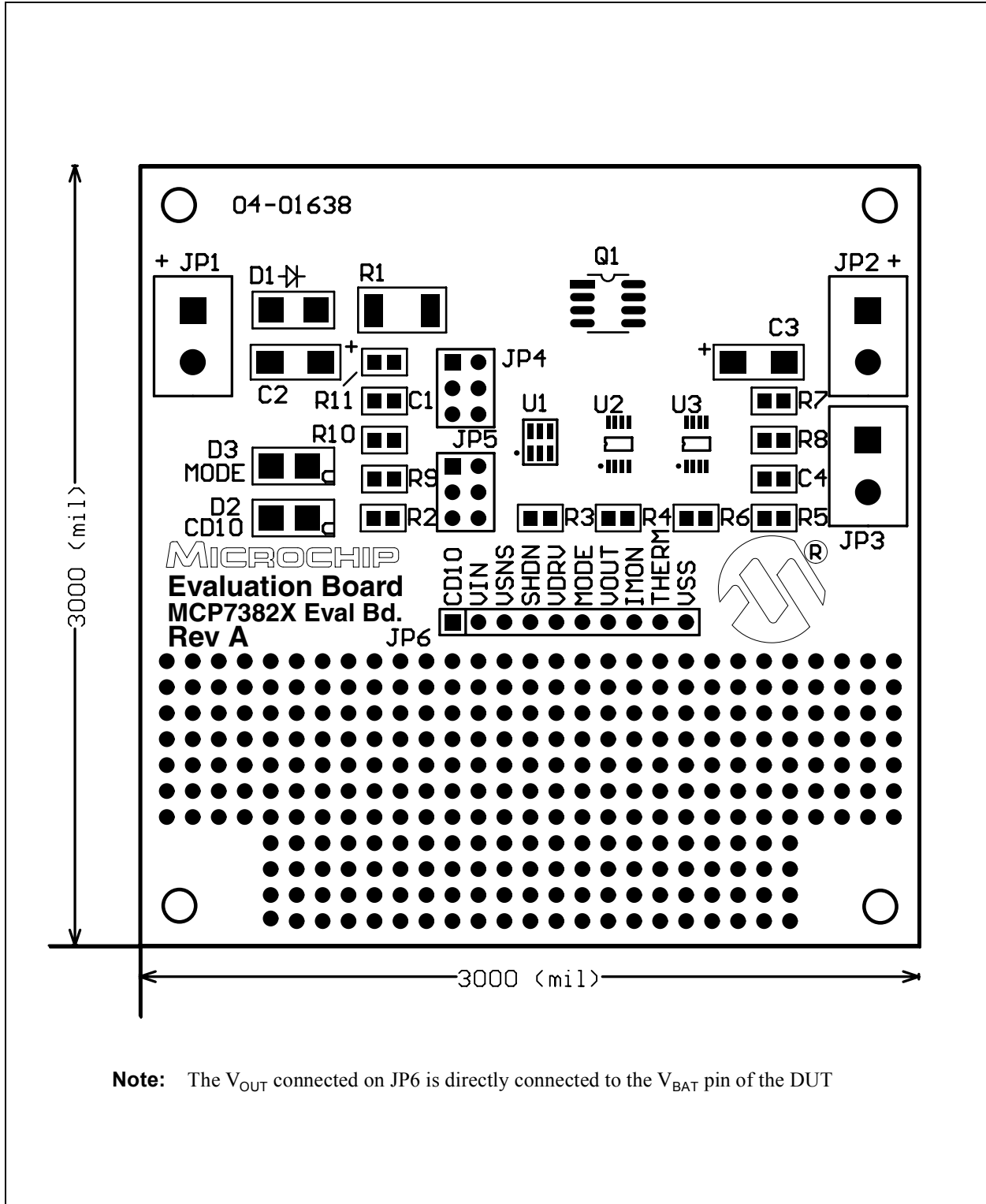
# MCP7382X Eval Kit User's Guide

## A.3 Board Schematic



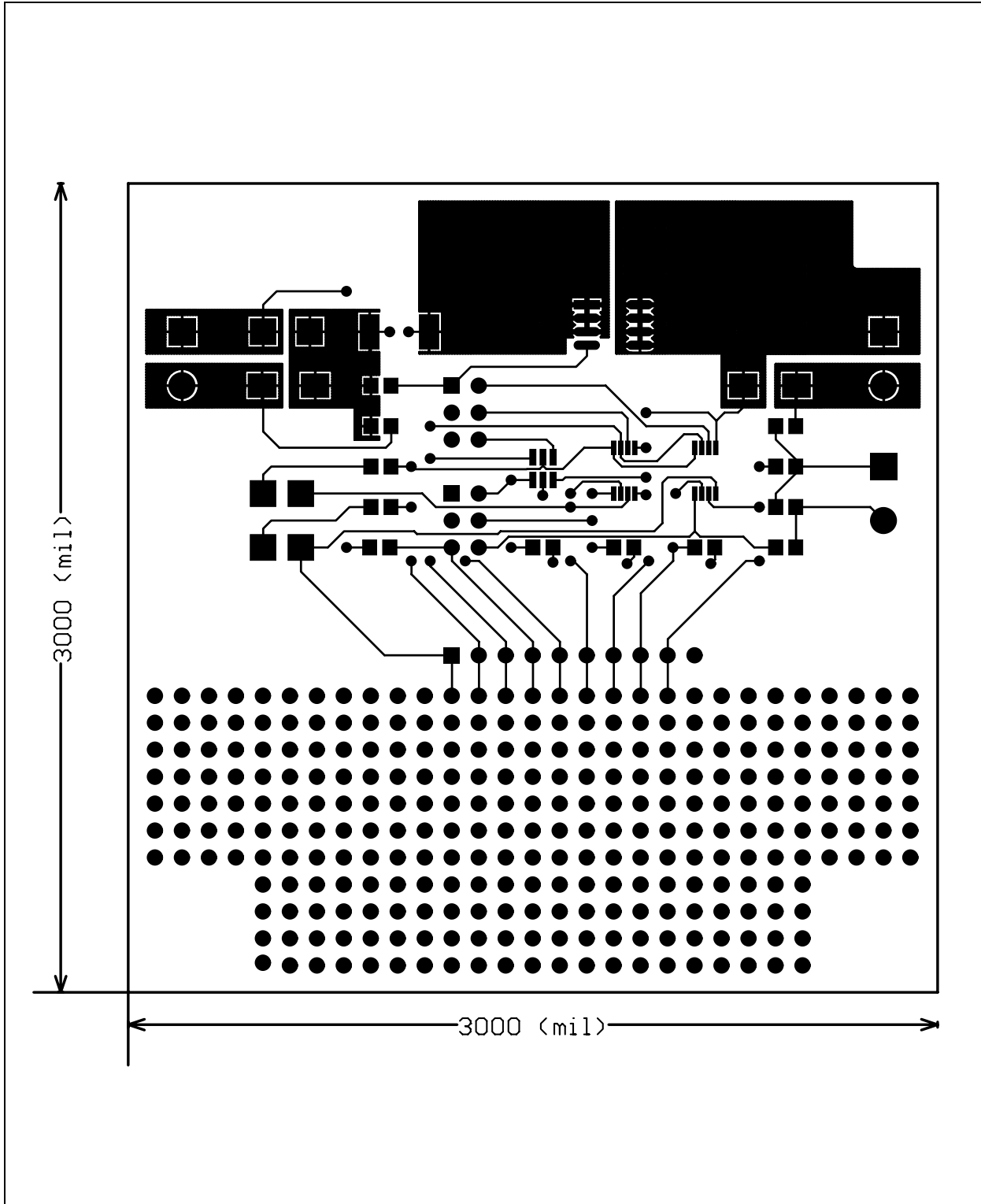
# Schematic and Board Layouts

## A.4 Board Layout - Top Assembly

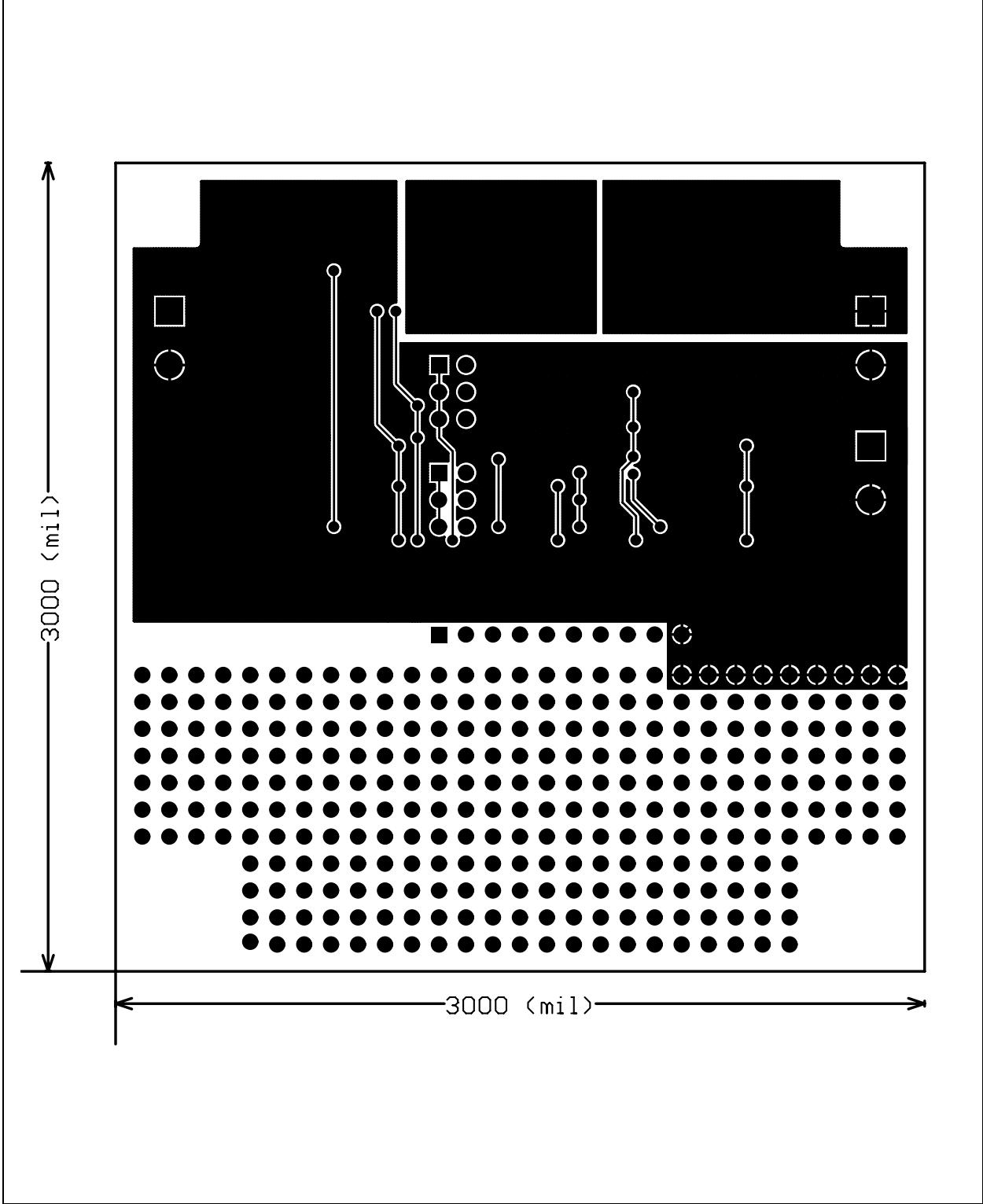


# MCP7382X Eval Kit User's Guide

## A.5 Board Layout - Top Layer



A.6 Board Layout - Bottom Layer



# MCP7382X Eval Kit User's Guide

---

NOTES:



# MCP7382X EVAL KIT USER'S GUIDE

## Appendix B. Bill Of Materials (BOM)

Table B.1: Bill Of Materials (BOM)

Reference Designator	Quantity	Description	Manufacturer	Manufacturer Part Number
R1	1	50 milliohm sense resistor	Panasonic	ERJ-L1WKF050U
R2	1	22.1 kohm, 1/10W, 1%, Thick Film Chip, 0805	Panasonic	ERJ-6ENF2212V
R3, R4, R5, R6	4	22.1 kohm, 1/10W, 1%, Thick Film Chip, 0805	Panasonic	ERJ-6ENF2212V
R7	0	Not populated, 0805		
R8	1	0.0 ohm Jumper, 0805	Phycomp	9C08052A0R00JLH
R9, R10	2	332 ohm, 1/10W, 1%, Thick Film Chip, 0805	Panasonic	ERJ-6ENF3320V
R11	1	274 kohm, 1/10W, 1%, Thick Film Chip, 0805	Panasonic	ERJ-6ENF2743V
C1, C4	2	0.1 $\mu$ F, 25V, Y5U Ceramic, 0805	Panasonic	ECJ-2VF1E104Z
C2, C3	2	10 $\mu$ F, 25V, Tantalum, SMC, Input/Output	Panasonic	ECS-T1EC106R
U1	1	Lithium-Ion Battery Charger, SOT23-6	Microchip	MCP73826-4.2VCH
U2	1	Lithium-Ion Battery Charger, MSOP8	Microchip	MCP73827-4.2VUA
U3	1	Lithium-Ion Battery Charger, MSOP8	Microchip	MCP73828-4.2VUA
D1	1	1.5 A Shottky Diode, Reverse Protection	Panasonic	MA2Q705
D2, D3	2	Red LED, Surface Mount	Lumex	SML-LX2832GC
Q1	1	P-channel MOSFET, SOIC8	Fairchild	NDS8434
JP1, JP2, JP3	3	Screw Header	Weidmuller	171602
JP4, JP5	1	Dual In-Line Header, "0.100, 3x2 Position	Sullins	PTC36DAAN <sup>1</sup>
JP6	1	Single In-Line Header, "0.100, 10x1 Position	Sullins	PTC36SYAN <sup>2</sup>
	2	Header Shunts	Sullins	STC02STAN
	4	Bump-ons - Protective Products	3M	SJ5003-0

**Note 1:** JP4, JP5 are ordered as a 36x2 strip header. Cut to fit. One for every 5 boards built.

**Note 2:** JP6 is ordered as a 36x1 strip header. Cut to fit. One for every 3 boards built.

# MCP7382X Eval Kit User's Guide

---

NOTES:



---

Information contained in this publication regarding device applications and the like is intended through suggestion only and may be superseded by updates. It is your responsibility to ensure that your application meets with your specifications. No representation or warranty is given and no liability is assumed by Microchip Technology Incorporated with respect to the accuracy or use of such information, or infringement of patents or other intellectual property rights arising from such use or otherwise. Use of Microchip's products as critical components in life support systems is not authorized except with express written approval by Microchip. No licenses are conveyed, implicitly or otherwise, under any intellectual property rights.

#### Trademarks


The Microchip name and logo, the Microchip logo, FilterLab, KEELOQ, MPLAB, PIC, PICmicro, PICMASTER, PICSTART, PRO MATE, SEEVAL and The Embedded Control Solutions Company are registered trademarks of Microchip Technology Incorporated in the U.S.A. and other countries.

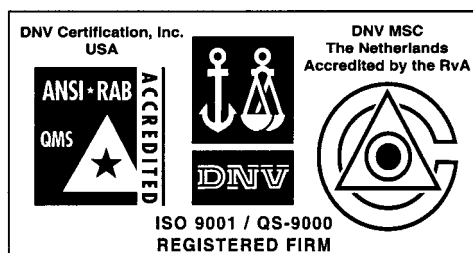
dsPIC, ECONOMONITOR, FanSense, FlexROM, fuzzyLAB, In-Circuit Serial Programming, ICSP, ICEPIC, microID, microPort, Migratable Memory, MPASM, MPLIB, MPLINK, MPSIM, MXDEV, PICC, PICDEM, PICDEM.net, rPIC, Select Mode and Total Endurance are trademarks of Microchip Technology Incorporated in the U.S.A.

Serialized Quick Term Programming (SQTP) is a service mark of Microchip Technology Incorporated in the U.S.A.

All other trademarks mentioned herein are property of their respective companies.

© 2002, Microchip Technology Incorporated, Printed in the U.S.A., All Rights Reserved.

 Printed on recycled paper.



*Microchip received QS-9000 quality system certification for its worldwide headquarters, design and wafer fabrication facilities in Chandler and Tempe, Arizona in July 1999. The Company's quality system processes and procedures are QS-9000 compliant for its PICmicro® 8-bit MCUs, KEELOQ® code hopping devices, Serial EEPROMs and microperipheral products. In addition, Microchip's quality system for the design and manufacture of development systems is ISO 9001 certified.*



# MICROCHIP

## WORLDWIDE SALES AND SERVICE

### AMERICAS

#### Corporate Office

2355 West Chandler Blvd.  
Chandler, AZ 85224-6199  
Tel: 480-792-7200 Fax: 480-792-7277  
Technical Support: 480-792-7627  
Web Address: <http://www.microchip.com>

#### Rocky Mountain

2355 West Chandler Blvd.  
Chandler, AZ 85224-6199  
Tel: 480-692-7966 Fax: 480-792-7456

#### Atlanta

500 Sugar Mill Road, Suite 200B  
Atlanta, GA 30350  
Tel: 770-640-0034 Fax: 770-640-0307

#### Boston

2 Lan Drive, Suite 120  
Westford, MA 01886  
Tel: 978-692-3848 Fax: 978-692-3821

#### Chicago

333 Pierce Road, Suite 180  
Itasca, IL 60143  
Tel: 630-285-0071 Fax: 630-285-0075

#### Dallas

4570 Westgrove Drive, Suite 160  
Addison, TX 75001  
Tel: 972-818-7423 Fax: 972-818-2924

#### Detroit

Tri-Atria Office Building  
32255 Northwestern Highway, Suite 190  
Farmington Hills, MI 48334  
Tel: 248-538-2250 Fax: 248-538-2260

#### Kokomo

2767 S. Albright Road  
Kokomo, Indiana 46902  
Tel: 765-864-8360 Fax: 765-864-8387

#### Los Angeles

18201 Von Karman, Suite 1090  
Irvine, CA 92612  
Tel: 949-263-1888 Fax: 949-263-1338

#### New York

150 Motor Parkway, Suite 202  
Hauppauge, NY 11788  
Tel: 631-273-5305 Fax: 631-273-5335

#### San Jose

Microchip Technology Inc.  
2107 North First Street, Suite 590  
San Jose, CA 95131  
Tel: 408-436-7950 Fax: 408-436-7955

#### Toronto

6285 Northam Drive, Suite 108  
Mississauga, Ontario L4V 1X5, Canada  
Tel: 905-673-0699 Fax: 905-673-6509

### ASIA/PACIFIC

#### Australia

Microchip Technology Australia Pty Ltd  
Suite 22, 41 Rawson Street  
Epping 2121, NSW  
Australia  
Tel: 61-2-9868-6733 Fax: 61-2-9868-6755

#### China - Beijing

Microchip Technology Consulting (Shanghai)  
Co., Ltd., Beijing Liaison Office  
Unit 915  
Bei Hai Wan Tai Bldg.  
No. 6 Chaoyangmen Beidajie  
Beijing, 100027, No. China  
Tel: 86-10-85282100 Fax: 86-10-85282104

#### China - Chengdu

Microchip Technology Consulting (Shanghai)  
Co., Ltd., Chengdu Liaison Office  
Rm. 2401, 24th Floor,  
Ming Xing Financial Tower  
No. 88 TIDU Street  
Chengdu 610016, China  
Tel: 86-28-6766200 Fax: 86-28-6766599

#### China - Fuzhou

Microchip Technology Consulting (Shanghai)  
Co., Ltd., Fuzhou Liaison Office  
Unit 28F, World Trade Plaza  
No. 71 Wusi Road  
Fuzhou 350001, China  
Tel: 86-591-7503506 Fax: 86-591-7503521

#### China - Shanghai

Microchip Technology Consulting (Shanghai)  
Co., Ltd.  
Room 701, Bldg. B  
Far East International Plaza  
No. 317 Xian Xia Road  
Shanghai, 200051  
Tel: 86-21-6275-5700 Fax: 86-21-6275-5060

#### China - Shenzhen

Microchip Technology Consulting (Shanghai)  
Co., Ltd., Shenzhen Liaison Office  
Rm. 1315, 13/F, Shenzhen Kerry Centre,  
Renminnan Lu  
Shenzhen 518001, China  
Tel: 86-755-2350361 Fax: 86-755-2366086

#### Hong Kong

Microchip Technology Hongkong Ltd.  
Unit 901-6, Tower 2, Metroplaza  
223 Hing Fong Road  
Kwai Fong, N.T., Hong Kong  
Tel: 852-2401-1200 Fax: 852-2401-3431

#### India

Microchip Technology Inc.  
India Liaison Office  
Divyasree Chambers  
1 Floor, Wing A (A3/A4)  
No. 11, O'Shaughnessey Road  
Bangalore, 560 025, India  
Tel: 91-80-2290061 Fax: 91-80-2290062

### Japan

Microchip Technology Japan K.K.  
Benex S-1 6F  
3-18-20, Shinyokohama  
Kohoku-Ku, Yokohama-shi  
Kanagawa, 222-0033, Japan  
Tel: 81-45-471-6166 Fax: 81-45-471-6122

### Korea

Microchip Technology Korea  
168-1, Youngbo Bldg. 3 Floor  
Samsung-Dong, Kangnam-Ku  
Seoul, Korea 135-882  
Tel: 82-2-554-7200 Fax: 82-2-558-5934

### Singapore

Microchip Technology Singapore Pte Ltd.  
200 Middle Road  
#07-02 Prime Centre  
Singapore, 188980  
Tel: 65-334-8870 Fax: 65-334-8850

### Taiwan

Microchip Technology Taiwan  
11F-3, No. 207  
Tung Hua North Road  
Taipei, 105, Taiwan  
Tel: 886-2-2717-7175 Fax: 886-2-2545-0139

### EUROPE

#### Denmark

Microchip Technology Nordic ApS  
Regus Business Centre  
Lautrup høj 1-3  
Ballerup DK-2750 Denmark  
Tel: 45 4420 9895 Fax: 45 4420 9910

#### France

Microchip Technology SARL  
Parc d'Activite du Moulin de Massy  
43 Rue du Saule Trapu  
Batiment A - 1er Etage  
91300 Massy, France  
Tel: 33-1-69-53-63-20 Fax: 33-1-69-30-90-79

#### Germany

Microchip Technology GmbH  
Gustav-Heinemann Ring 125  
D-81739 Munich, Germany  
Tel: 49-89-627-144 0 Fax: 49-89-627-144-44

#### Italy

Microchip Technology SRL  
Centro Direzionale Colleoni  
Palazzo Taurus 1 V. Le Colleoni 1  
20041 Agrate Brianza  
Milan, Italy  
Tel: 39-039-65791-1 Fax: 39-039-6899883

#### United Kingdom

Arizona Microchip Technology Ltd.  
505 Eskdale Road  
Winnersh Triangle  
Wokingham  
Berkshire, England RG41 5TU  
Tel: 44 118 921 5869 Fax: 44-118 921-5820

01/18/02

